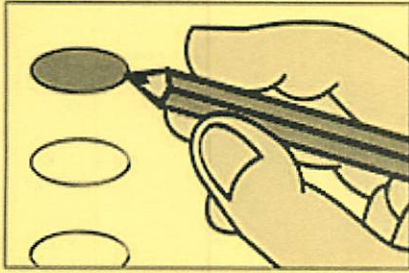


A Landrum United Methodist B South Carolina C Emergency/Provisional

Instructions

Marking Your Ballot



- To vote, darken the oval beside your choice using a No. 2 pencil or blue or black pen. Do not make marks outside the oval.
- Vote for one candidate in each contest unless otherwise indicated.
- You do not have to vote in every contest.
- To change or correct your ballot, request a replacement from the election official.

Write-Ins

- To write-in a candidate, darken the oval beside "Write-in" and print the name on the line provided.

School Trustee District 1
Vote for up to Five

- Debbie Strange Baker
- Ronnie Blackwell
- Henry Gramling
- Mark Holden
- Gena McCall Meredith
- Joel Pack
- Mark Rollins
- Jeff Sumner
- Summer Tebalt
- Write-In
- Write-In
- Write-In
- Write-In
- Write-In

Fire District Commissioner
Landrum Fire and Rescue District Area 1
Vote for up to Two

- Joe E Brown III
- J R Jackson
- Write-In
- Write-In

LOCAL QUESTIONS

SPARTANBURG COUNTY SALES TAX REFERENDUM

Must a special one percent sales and use tax be imposed in Spartanburg County (the "County") for 6 years to raise the amounts specified for the following purposes:

Priority No. 1 Cost \$ 151,519,154
Replacement of current City of Spartanburg and Spartanburg County judicial facilities (to include a new Spartanburg County Courthouse, City of Spartanburg municipal court/police facilities, Spartanburg County emergency operations center (currently located in the basement of the County Courthouse), and associated parking and infrastructure, in one or more structures)

Priority No. 2 Cost \$ 65,326,428
Replacement of current City of Spartanburg City Hall and Spartanburg County Administrative Building (to include new joint use government center facilities to serve both the City of Spartanburg and Spartanburg County, and associated parking and infrastructure, in one or more structures)

Priority No. 3 Cost \$ 7,554,418
Road and Bridge Projects (to include the then highest priority projects identified in the County's Capital Improvement Plan after taking into account the availability of State and other funds)

Total Cost \$ 224,400,000

and pending the receipt of such sales and use tax, must the County also be authorized to issue and sell, either as a single issue or as several separate issues, general obligation bonds (the "Bonds") of the County in an aggregate principal amount not exceeding \$217,000,000, to defray the costs of the projects listed above plus issuance costs, to be paid from the sales and use tax to be imposed as stated herein and pledged to the payment of the principal of and interest on the Bonds, and, in the event such sales and use tax is inadequate, such bonds shall be payable from a sufficient ad valorem tax imposed on all taxable property in the County?

CONDITIONS AND RESTRICTIONS ON THE USE OF SALES AND USE TAX REVENUE COLLECTED UNDER THE CAPITAL PROJECTS SALES TAX ACT: The capital projects sales and use tax and any related Bond proceeds shall be used and expended for procurement, design, engineering, project management, construction and/or improvement of the projects listed above, including payment of such sums as may be required in connection with the issuance of Bonds. Net proceeds of the capital project sales and use tax or the proceeds of any related bonds, if approved, must be expended for the purposes stated, in the priority listed above. The expenditures of revenues from the capital projects sales and use tax or the proceeds of any related bonds, if approved, shall be subject to acquisition of property, rights-of-way, design and engineering considerations, the receipt of all necessary permits and regulatory approvals, funding of projects from other sources (including unanticipated grants that fund a project), bids in excess of project estimates, qualifications of bidders, cost overruns, financing costs, exhaustion or insufficiency of net sales and use tax revenues or Bond proceeds to complete the projects in the order and priority stated above, and other unforeseen circumstances and conditions. In the event any of the foregoing affect any project, the County Council shall, by ordinance, make findings regarding the same before funding a lesser priority project. Nothing herein shall prevent the simultaneous funding of multiple projects consistent with each project's designated priority.

- Yes/In favor of the question
- No/Opposed to the question

CONTINUE VOTING ON BACK

A B C Typ:01 Seq:0020 Spl:01

CITY OF LANDRUM GENERAL ELECTION

City Council
Vote for up to Three

- Tammy Wells Cox
- Billy Inman
- Daniel Prince
- Randolph Randy Wohnig
-
- Write-In
- Write-In
- Write-In